

Isaac Theatre Royal

Index of contents 2010

Theatre specifications

Address	Page 2
Stage Dimensions	Page 2
Dressing rooms and side of stage	Page 3
Flying System	Page 3
Stage Lighting (supplies)	Page 4
Orchestra pit lift	Page 5
Audio	Page 5
Stage Managers Control System	Page 5
Outside Broadcast	Page 5
Stage Drapes	Page 5
Stage Drapes (continued)	Page 6
Stage access	Page 6

Standard Rig Hanging Plot

Spreadsheet fly lines 0 – 40	Page 7
Spreadsheet fly lines 41 – 81	Page 8

Standard Rig Patch

Spreadsheet LX 1	Page 9
Spreadsheet LX 2	Page 10
Spreadsheet LX 3	Page 11
Spreadsheet LX 4	Page 12
Spreadsheet LX 5	Page 13
Spreadsheet Gallery	Page 14
Spreadsheet U/S Floor	Page 15

Standard Rig Lighting Plot

Basic Lighting plot	Page 16
Detailed Lighting plot 1 : 100 at A1	Page 17

We also can provide CAD drawings of the building (dwg/dxf) if required.
Please contact for further details.

Isaac Theatre Royal

145 Gloucester Street

Christchurch

New Zealand

Phone +64 03 366 6326

Email backstage@isaactheatreroyal.co.nz

Theatre specifications

Stage Dimensions

Proscenium

Height	7.2 metres
Width	10.5 metres

Wings

PS proscenium arch to stage box side wall	6.2 metres
OP proscenium arch to fly rail	6.7 metres
Distance between OP and PS fly floors	18.8 metres

Stage depth

The setting line is the back (up stage edge) of the proscenium opening	
Setting line to most up stage fly line (set 79)	15.180 metres
Setting line to back wall of stage box.	
Setting line to edge of forestage	0.660 metres
Setting line to DS edge of back wall pillars	16.170 metres

Stage Heights

Stage to underside of grid	18.440 metres
Stage to underside of fly galleries (clear)	9.0 metres
Stage to stalls floor front	1.45 metres

Stage Floor

The stage floor is flat (no rake)
The stage floor is two layers of 18mm tongued plywood
Covered cable trap surrounds the wooden floor
Stage floor is painted black
Set etc. may be screwed to the stage floor so long as holes are filled before leaving the venue

Basement

Male and female orchestra toilets	
Orchestra assembly or second wardrobe room	
Conductors dressing room	
Setting line to ground floor auditorium side of orchestra pit	3.31 metres

Dressing rooms and side of stage

Stage level

Five dressing rooms each with toilet and shower 2x1 person, 2x2 people, 1x3 person
Main wardrobe room incl. 2 washing machines and 2 dryers
Wig fitting area
Stage security office

Side stage mezzanine level

Women's and Men's toilets
House technical, production management and tour manager separate offices
Crew area

Level One

Dressing room stalls area incl. toilets and showers

Level two

Green Room with kitchen
Chorus dressing room, two showers, and three toilets

Orchestra Pit

11.4m front to back
10m wide at pro-arch
12m wide at front
14m wide US of Pros (4m under PS wing)

Flying System

The flying system is a single purchased counterweight system, situated on the OP side of the stage which can be operated at stage level or from the first fly level. The system is manually operated.

Number of counterweighted battens	79 incl. house curtain
Batten length	17 metres
Batten material	RHS 75mm x 50mm
Batten spacing	180mm centres
Line set max load	500kg
Max point load	250kg
Batten drift	17m
Pick-ups per line set	6
Panorama bars (additional to the 79 battens)	2 (1 per side)

Stage lighting

Operating position in rear center stalls

Control

Theatrelight Cuemaster 120 channel desk with soft patch
Four 4 way Theatrelight DMX Splitters

Dimmers

10 x 12way Theatrelight 10amp DMX Rack packs
6 x 12 way Theatrelight 10amp TLSerial touring packs
1 x 120ch DMX to TLserial converter

Lights

Profiles:	12	Strand Cantata 1200W 18/32 zoom spots
	12	Selecon Pacific 1000W 12°-28° zoom spots
	6	Selecon Pacific 1000W 23°-50° zoom spots
Fresnels	64	Selecon 1200W (with barn doors)
	9	Selecon 2000 W (with barn doors)
PCs:	9	Selecon 1000W 4.5/70 (with barn doors)
Cyc lighting:	4	Iris 4 1250W per cell
	4	Selecon Aurora 4 cell ground row or flown (1250W)

Follow spots – Not included in venue hire

2 x Lycian 400
\$150.00 + GST per light 1st day hire
\$75.00 + GST per subsequent day

Lighting Bars

5 x 17m
Ladder truss lighting bars in 3m sections
30 waylines per bar run to fly floor dimmers

Orchestra pit lift

2400x2400 platform center front of pit lifting from pit floor to stage 909kg(2000lbs) max

Audio

1 x Soundcraft LX7-ii 16 channel desk
4 x EV ZX5 speaker, 15" and horn
1 x QSC RMx2450 Amp
4 x K&M 21435 Speaker stands
1 x Shure Beta 58a vocal mic
1 x Shure SM58 vocal mic
1 x Sennheiser EW112/135 radio mic combo (hand held or lapel)
2 x K&M 210/9b heavy duty mic stands
1 x 50m snake, 24 send + 4 return
1 x Sony CDPXE270 CD player
1 x dbx231 graphic EQ
2 x QSC K8 powered speakers (Foyer PA or fold back)

Stage Managers Control System

General paging and program relay to all relevant backstage areas
Up to four coms loops
Extensive coms plug-in points throughout the theatre and foyers
8 x single channel TP belt packs with headsets
2 x dual channel TP belt packs with headsets

Outside Broadcast

63Amp power feed outside, more can be run from inside.

Stage Drapes

House Curtain

13m x 8.5m Vegas red (dark) with 50% fullness, gold trim and chain tail

Borders

5 x 18m x 3.6m drop black wool surge with tail pipe

Legs

5 x 9m x 4.8m wide black wool surge with tail chain

Tabs

2 x tab tracks

2 x 18m covering tab sets incl 1m overlap. One set has 30% fullness, the other is flat.

Chain tail

Cyclorama

15m x 9m with tail pipe

Light Blue\grey PVC suitable for front and rear projection

Stage access

Single lane full sized truck access

Ability to swing-lift two 20' containers inside dock area (inside)

Loading door from dock to stage box 5m x 9m high

Isaac Theatre Royal, Christchurch - Standard Rig Hanging Plot

Lineset	Distance from Setting Line (mm)	Item	Height	Notes
0	80	Fire Safety Curtain		
1	260	Black Pelmet		
2	440	Red House Curtain		
3	620			
4	800			
5	980	LX 1		
6	1160			
7	1340			
8	1520			
9	1700			
10	1880			
11	2060			
12	2240			
13	2420			
14	2600	Border 1		
15	2780	Legs 1		
16	2980			
17	3140			
18	3320	LX 2		
19	3500			
20	3680			
21	3860			
22	4040			
23	4220			
24	4400			
25	4580			
26	4760			
27	4940			
28	5120	Border 2		
29	5300	Legs 2		
30	5480			
		Gap due to structural truss		
31	5900			
32	6080	LX 3		
33	6260			
34	6440			
35	6620	Black Tabs		
36	6800			
37	6980			
38	7160			
39	7340			
40	7520			

Setting line = Back of proscenium

Batten in-dead = 1220 mm (top of batten)

Batten out-dead = mm (top of batten)

Maximum drift = mm (stage floor to out dead)

Stage floor to underside of grid =

Proscenium dimensions; width = 10470 mm, height = 7260 mm

Isaac Theatre Royal, Christchurch - Standard Rig Hanging Plot

Lineset	Distance from Setting Line (mm)	Item	Height	Notes
41	7700			
42	7980			
43	8160			
44	8240	Border 3		
45	8420	Legs 3		
46	8600			
47	8780			
48	8960			
49	9140	LX 4		
50	9320			
51	9500			
52	9680			
53	9860			
54	10040			
55	10220			
56	10400			
57	10580			
58	10760	Border 4		
59	10940	Legs 4		
		Gap due to structural truss		
60	11400			
61	11580	Black Smother		
62	11760			
63	11940	White PVC Cyclorama		
64	12120			
65	12300			
66	12480			
67	12660			
68	12840			
69	13020			
70	13200			
71	13380	Border 5		
72	13560	Legs 5		
73	13740			
74	13920	LX 5		
75	14100			
76	14280			
77	14460			
OP1		OP pan bar		
79	14820			
PS1		PS pan bar		
81	15180			

Battens are 75 x 50 mm RHS
 Batten length = 17000 mm
 No. of suspension wires = 6 off 6 mm wire rope
 Max distributed load on each batten is 500 Kg
 Max point load = 250 Kg

ISAAC THEATRE ROYAL Standard Rig Patch 2010

PATCH	CHANNEL	DIMMER	LX 1	DESCRIPTION	COLOUR
A1 \ 1					
A1 \ 2					
A1 \ 3					
A1 \ 4					
A1 \ 5	19	19		1.2kW Fresnel	L119
A2 \ 1	20	20		1.2kW Fresnel	O/W
A2 \ 2	21	21		1.2kW Fresnel	L106
A2 \ 3	22	22		1.2kW Fresnel	L158
A2 \ 4					
A2 \ 5					
A3 \ 1	23	23		1.2kW Fresnel	L119
A3 \ 2	24	24		1.2kW Fresnel	O/W
A3 \ 3	25	25		1.2kW Fresnel	L106
A3 \ 4	26	26		1.2kW Fresnel	L158
A3 \ 5					
A4 \ 1					
A4 \ 2	27	27		1.2kW Fresnel	L119
A4 \ 3	28	28		1.2kW Fresnel	O/W
A4 \ 4	29	29		1.2kW Fresnel	L106
A4 \ 5	30	30		1.2kW Fresnel	L158
A5 \ 1					
A5 \ 2					
A5 \ 3	31	31		1.2kW Fresnel	L119
A5 \ 4	32	32		1.2kW Fresnel	O/W
A5 \ 5	33	33		1.2kW Fresnel	L106
A6 \ 1	34	34		1.2kW Fresnel	L158
A6 \ 2					
A6 \ 3					
A6 \ 4					
A6 \ 5					

ISAAC THEATRE ROYAL Standard Rig Patch 2010

PATCH	CHANNEL	DIMMER	LX 2	DESCRIPTION	COLOUR
B1 \ 1					
B1 \ 2					
B1 \ 3					
B1 \ 4					
B1 \ 5	35	35		1.2kW Fresnel	L119
B2 \ 1	36	36		1.2kW Fresnel	O/W
B2 \ 2	37	37		1.2kW Fresnel	L106
B2 \ 3	38	38		1.2kW Fresnel	L158
B2 \ 4	39	39		2kW Fresnel	O/W
B2 \ 5					
B3 \ 1	40	40		1.2kW Fresnel	L119
B3 \ 2	41	41		1.2kW Fresnel	O/W
B3 \ 3	42	42		1.2kW Fresnel	L106
B3 \ 4	43	43		1.2kW Fresnel	L158
B3 \ 5	44	44		2kW Fresnel	O/W
B4 \ 1					
B4 \ 2	45	45		1.2kW Fresnel	L119
B4 \ 3	46	46		1.2kW Fresnel	O/W
B4 \ 4	47	47		1.2kW Fresnel	L106
B4 \ 5	48	48		1.2kW Fresnel	L158
B5 \ 1					
B5 \ 2	49	49		2kW Fresnel	O/W
B5 \ 3	50	50		1.2kW Fresnel	L119
B5 \ 4	51	51		1.2kW Fresnel	O/W
B5 \ 5	52	52		1.2kW Fresnel	L106
B6 \ 1	53	53		1.2kW Fresnel	L158
B6 \ 2					
B6 \ 3					
B6 \ 4					
B6 \ 5					

ISAAC THEATRE ROYAL Standard Rig Patch 2010

PATCH	CHANNEL	DIMMER	LX 3	DESCRIPTION	COLOUR
C1 \ 1	X	X		Worklight (Group 1)	
C1 \ 2					
C1 \ 3					
C1 \ 4					
C1 \ 5	54	54		1.2kW Fresnel	L119
C2 \ 1	55	55		1.2kW Fresnel	O/W
C2 \ 2	56	56		1.2kW Fresnel	L106
C2 \ 3	57	57		1.2kW Fresnel	L158
C2 \ 4	58	58		2kW Fresnel	O/W
C2 \ 5					
C3 \ 1	59	59		1.2kW Fresnel	L119
C3 \ 2	60	60		1.2kW Fresnel	O/W
C3 \ 3	61	61		1.2kW Fresnel	L106
C3 \ 4	62	62		1.2kW Fresnel	L158
C3 \ 5	63	63		2kW Fresnel	O/W
C4 \ 1					
C4 \ 2	64	64		1.2kW Fresnel	L119
C4 \ 3	65	65		1.2kW Fresnel	O/W
C4 \ 4	66	66		1.2kW Fresnel	L106
C4 \ 5	67	67		1.2kW Fresnel	L158
C5 \ 1					
C5 \ 2	68	68		2kW Fresnel	O/W
C5 \ 3	69	69		1.2kW Fresnel	L119
C5 \ 4	70	70		1.2kW Fresnel	O/W
C5 \ 5	71	71		1.2kW Fresnel	L106
C6 \ 1	72	72		1.2kW Fresnel	L158
C6 \ 2					
C6 \ 3					
C6 \ 4					
C6 \ 5	X	X		Worklight (Group 1)	

ISAAC THEATRE ROYAL Standard Rig Patch 2010

PATCH	CHANNEL	DIMMER	LX 4	DESCRIPTION	COLOUR
D1 \ 1					
D1 \ 2					
D1 \ 3					
D1 \ 4					
D1 \ 5	73	73		1.2kW Fresnel	L119
D2 \ 1	74	74		1.2kW Fresnel	O/W
D2 \ 2	75	75		1.2kW Fresnel	L106
D2 \ 3	76	76		1.2kW Fresnel	L158
D2 \ 4	77	77		2kW Fresnel	O/W
D2 \ 5					
D3 \ 1	78	78		1.2kW Fresnel	L119
D3 \ 2	79	79		1.2kW Fresnel	O/W
D3 \ 3	80	80		1.2kW Fresnel	L106
D3 \ 4	81	81		1.2kW Fresnel	L158
D3 \ 5	82	82		2kW Fresnel	O/W
D4 \ 1					
D4 \ 2	83	83		1.2kW Fresnel	L119
D4 \ 3	84	84		1.2kW Fresnel	O/W
D4 \ 4	85	85		1.2kW Fresnel	L106
D4 \ 5	86	86		1.2kW Fresnel	L158
D5 \ 1					
D5 \ 2	87	87		2kW Fresnel	O/W
D5 \ 3	88	88		1.2kW Fresnel	L119
D5 \ 4	89	89		1.2kW Fresnel	O/W
D5 \ 5	90	90		1.2kW Fresnel	L106
D6 \ 1	91	91		1.2kW Fresnel	L158
D6 \ 2					
D6 \ 3					
D6 \ 4					
D6 \ 5					

ISAAC THEATRE ROYAL Standard Rig Patch 2010

PATCH	CHANNEL	DIMMER	LX 5	DESCRIPTION	COLOUR
E1 \ 1					
E1 \ 2					
E1 \ 3					
E1 \ 4					
E1 \ 5					
E2 \ 1	92	92		Iris4 Cyc units 1250W	L119
E2 \ 2	93	93		Iris4 Cyc units 1250W	L106
E2 \ 3	94	94		Iris4 Cyc units 1250W	L158
E2 \ 4	95	95		Iris4 Cyc units 1250W	L139
E2 \ 5					
E3 \ 1	96	96		Iris4 Cyc units 1250W	L119
E3 \ 2	97	97		Iris4 Cyc units 1250W	L106
E3 \ 3	98	98		Iris4 Cyc units 1250W	L158
E3 \ 4	99	99		Iris4 Cyc units 1250W	L139
E3 \ 5					
E4 \ 1	100	100		Iris4 Cyc units 1250W	L119
E4 \ 2	101	101		Iris4 Cyc units 1250W	L106
E4 \ 3	102	102		Iris4 Cyc units 1250W	L158
E4 \ 4	103	103		Iris4 Cyc units 1250W	L139
E4 \ 5					
E5 \ 1	104	104		Iris4 Cyc units 1250W	L119
E5 \ 2	105	105		Iris4 Cyc units 1250W	L106
E5 \ 3	106	106		Iris4 Cyc units 1250W	L158
E5 \ 4	107	107		Iris4 Cyc units 1250W	L139
E5 \ 5					
E6 \ 1					
E6 \ 2					
E6 \ 3					
E6 \ 4					
E6 \ 5					

ISAAC THEATRE ROYAL Standard Rig Patch 2010

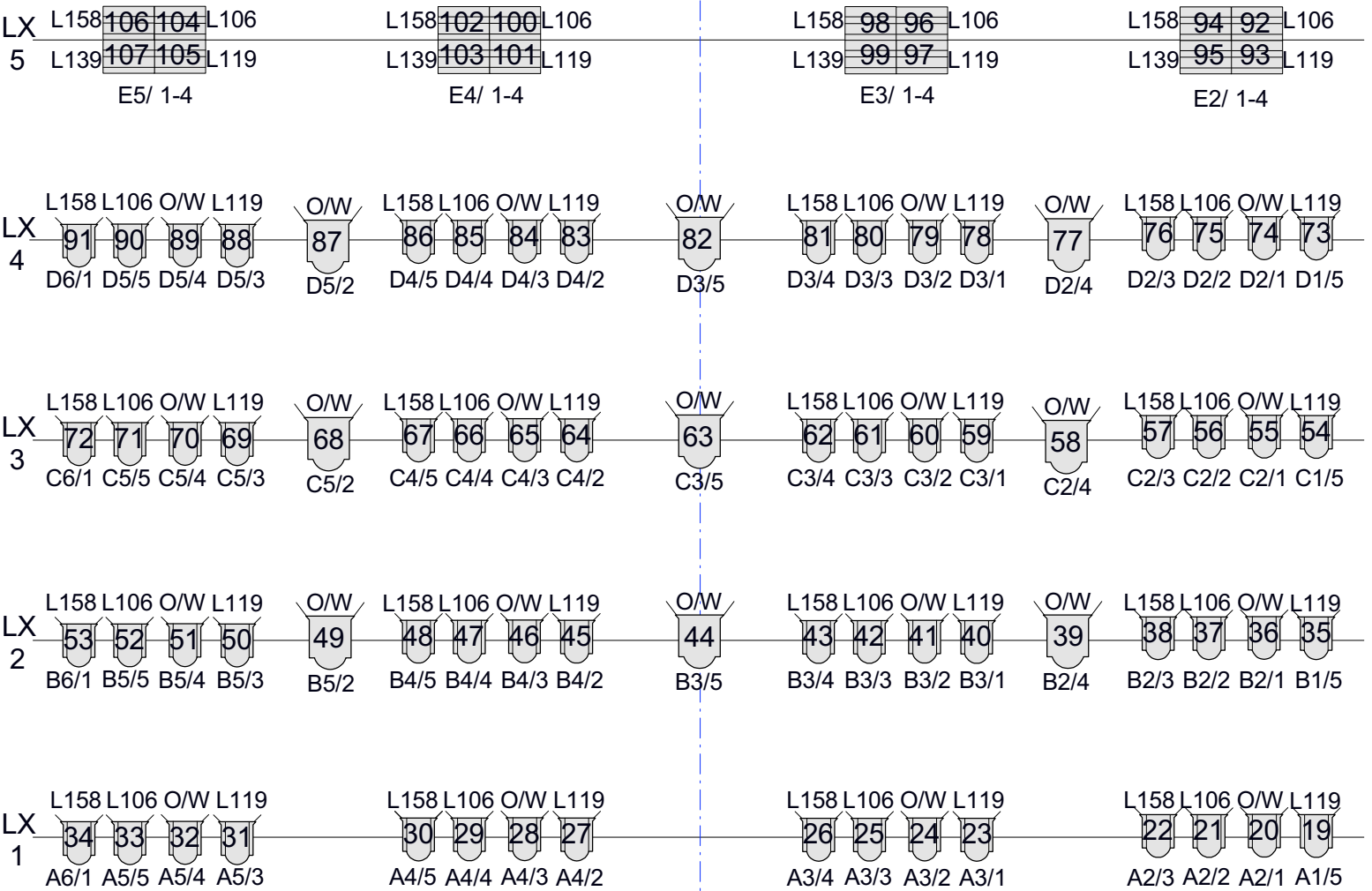
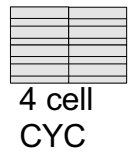
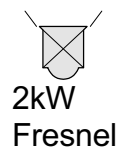
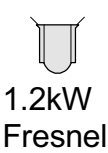
WAYLINE	CHANNEL	DIMMER	Gallery	DESCRIPTION	COLOUR
16	108	108		12°/28° PACIFIC	O/W
21	109	109		12°/28° PACIFIC	O/W
22	110	110		12°/28° PACIFIC	O/W
25	111	111		12°/28° PACIFIC	O/W
28	112	112		12°/28° PACIFIC	O/W
30	113	113		12°/28° PACIFIC	O/W
31	114	114		12°/28° PACIFIC	O/W
34	115	115		12°/28° PACIFIC	O/W
36	116	116		12°/28° PACIFIC	O/W
37	117	117		12°/28° PACIFIC	O/W
38	118	118		12°/28° PACIFIC	O/W
39	119	119		12°/28° PACIFIC	O/W
1&60	120	120		Curtain Warmer	L164

ISAAC THEATRE ROYAL Standard Rig Patch 2010

WAYLINE	CHANNEL	DIMMER	LOCATION	DESCRIPTION	COLOUR
221	121	121	U/S Trap	Aurora Cyc Unit 1250W	L119
222	122	122		Aurora Cyc Unit 1250W	L106
223	123	123		Aurora Cyc Unit 1250W	L158
224	124	124		Aurora Cyc Unit 1250W	L139
225	125	125		Aurora Cyc Unit 1250W	L119
226	126	126		Aurora Cyc Unit 1250W	L106
227	127	127		Aurora Cyc Unit 1250W	L158
228	128	128		Aurora Cyc Unit 1250W	L139
229	129	129		Aurora Cyc Unit 1250W	L119
230	130	130		Aurora Cyc Unit 1250W	L106
231	131	131		Aurora Cyc Unit 1250W	L158
232	132	132		Aurora Cyc Unit 1250W	L139
233	133	133		Aurora Cyc Unit 1250W	L119
234	134	134		Aurora Cyc Unit 1250W	L106
235	135	135		Aurora Cyc Unit 1250W	L158
236	136	136		Aurora Cyc Unit 1250W	L139

ISAAC THEATRE ROYAL

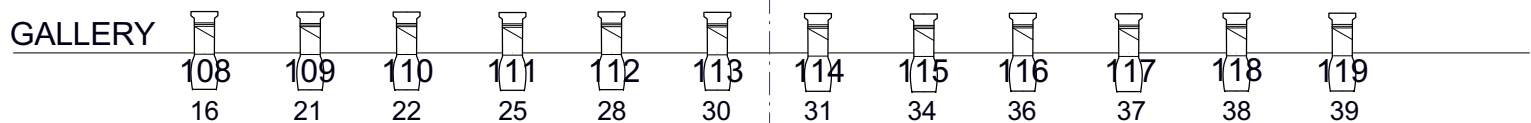
Standard House Rig



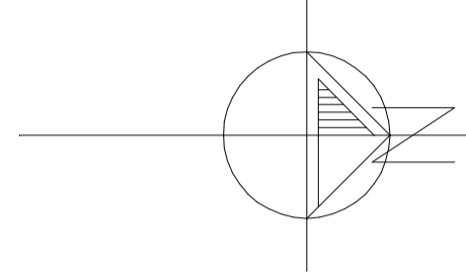
Proscenium

KEY:

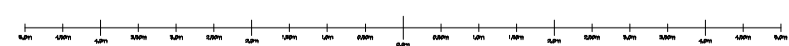
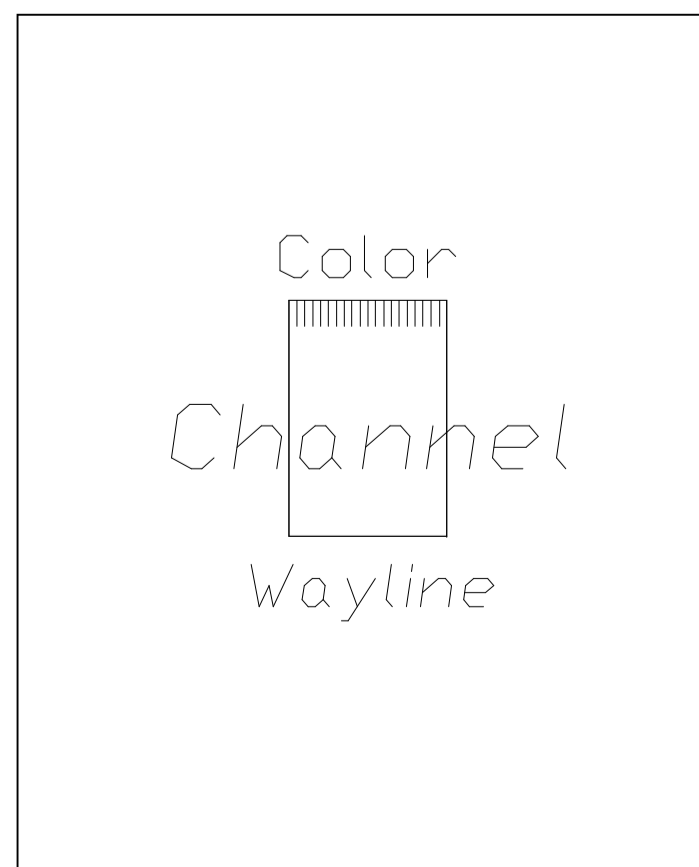
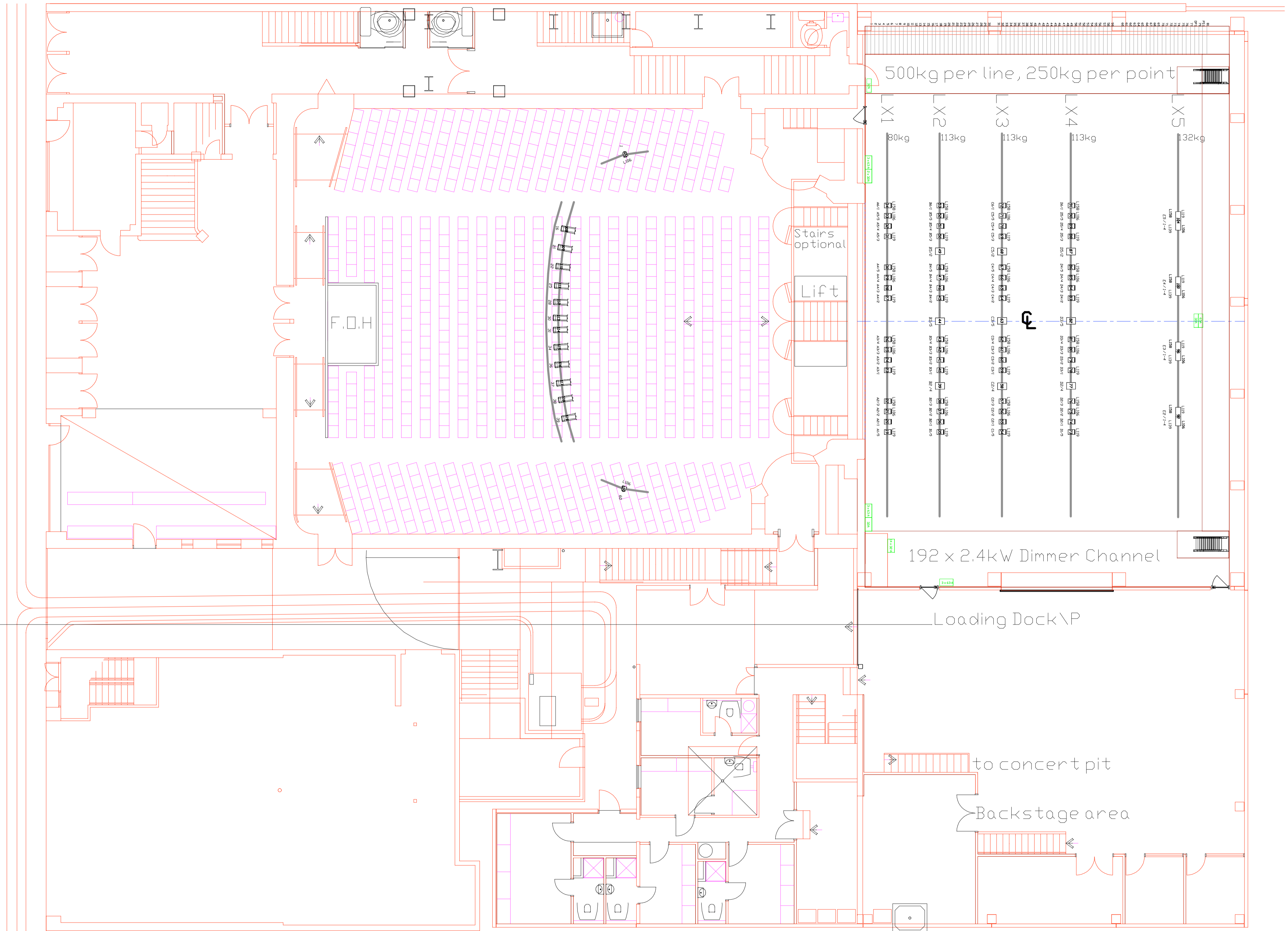
- Color Channel
- Wayline



NOTE:



Entrance from Gloucester Street



Project	Theatre Isaak Royal Ground Level	File number	2.3.2
Production		Date	
Drawing by	Matthias Mard	Sign	
		Date drawn	10.08.2010
		Date pref.	
		Scale	1:100 @ A1
		File	ITR_ground.vwx